

THE HAUTE JOAILLERIE REPORT SUMMER 2023 PART III

*BUCCELLATI,
BOUCHERON,
CARTIER,
ELIE TOP,
GRAFF,
GUCCI,
HARRY WINSTON,
JACOB & CO,
AND LOUIS VUITTON*

Writer: Olivier Dupon

Flight Necklace by LOUIS VUITTON in white gold set with one cushion-cut ruby of 4.17 carats from Mozambique and diamonds; **Deep Time**. POA.
www.louisvuitton.com



read
more...

MAGAZINES &
INTERNATIONAL PRESS

NEWSSTAND

press reader



WATCHES



FASHION & JEWELLERY



LIFESTYLE & TRAVEL



FINANCE & MARKETS



HOME & STYLE



SPORTS & LUXURY CARS

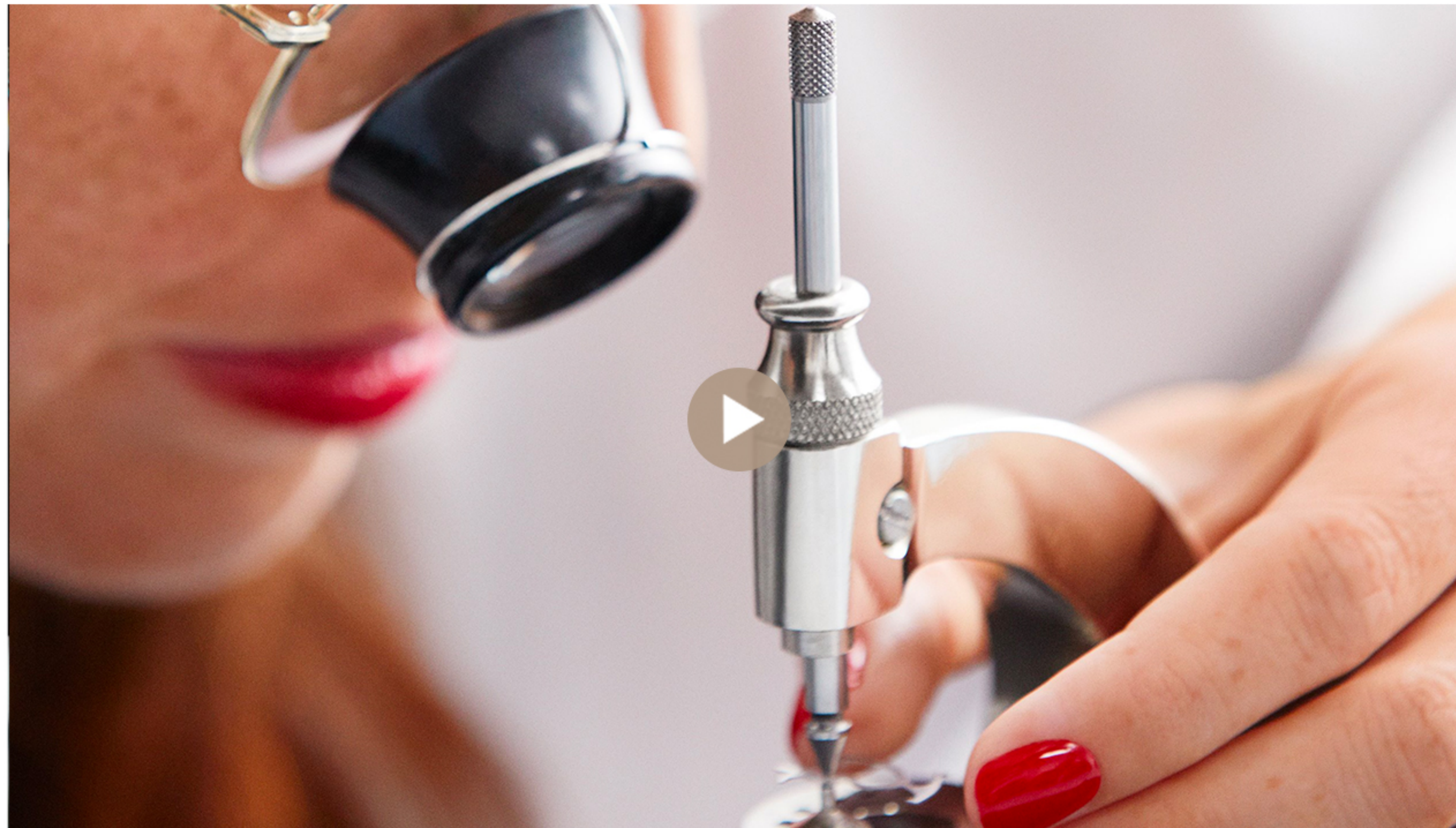


JETS & YACHTS


PATEK PHILIPPE
GENEVE
BEGIN YOUR OWN TRADITION

Only Human

A film about skill



"At our family-owned company, everything we do relies on the skills and creativity of our people. Very human skills which cannot be rushed or replaced. Only humans can accept the challenge to always be at the edge of what is possible."



Thierry Stern, President

MAGAZINES &
INTERNATIONAL PRESS

NEWSSTAND

press reader



WATCHES



FASHION & JEWELLERY



LIFESTYLE & TRAVEL



FINANCE & MARKETS



HOME & STYLE



SPORTS & LUXURY CARS



JETS & YACHTS

www.buccellati.com

Extra incentives to go to Capri, Italy are usually not necessary thanks to the island's unsurpassed lifestyle (upscale romanticism). That would be true if it was not for BUCCELLATI's recent tribute to the city, a special edition collection of six bangles, which can only be purchased in the two BUCCELLATI boutiques in Capri (the historic boutique in Via Camerelle, and at the brand new boutique opened this year at Hotel La Palma).

Each bangle is above all a homage to the founder Mario Buccellati's pioneering use of enamel in jewellery. From forest green enamel (either set with a laurel leaf wreath or with floral insignias), luminous turquoise (set with a golden vine), navy blue (either set with floral sapphire studs or with cloud swirls surrounding precious suns – beryls), and sky blue (set with stylised stars akin to medals). This embrace of colours is of course indistinguishable from Capri (from the bougainvillea, the golden facades and the all-encompassing Mediterranean sea), but it also recalls another recent foray by BUCCELLATI into chroma, the **Macri Color Collection** (reviewed in my Spring 2023 *haute joaillerie report*).

With this new capsule collection, neo-classic style meets the *dolce vita* unique to the Naples area. Each motif set onto the enamel base attests to the mastery of the partnership between goldsmiths and stone setters. If the bangles could be rolled flat, they would look even more like sumptuous braids or ribbons.

This exciting launch should not overshadow the other important news that BUCCELLATI is now the official jewellery partner of the Goodwood Racecourse (part of Qatar Goodwood Festival). “A *bespoke silver trophy designed by Andrea Buccellati is awarded to the winning Owner; silver creations from the Opera Collection will be awarded to the winning Trainer and Jockey, as well as the traditional photo frame, presented to the groom of the winning horse*”, the team says.

Bellavita Capri Bangle in yellow gold, white gold with enamel set with pink and yellow sapphires, and diamonds. POA.



MAGAZINES &
INTERNATIONAL PRESS

NEWSSTAND

press reader



WATCHES



FASHION & JEWELLERY



LIFESTYLE & TRAVEL



FINANCE & MARKETS



HOME & STYLE



SPORTS & LUXURY CARS



JETS & YACHTS

www.buccellati.com

(from top to bottom) Ginestra Capri Bangle in yellow gold, white gold with enamel set with diamonds and yellow sapphires; Azzurra Capri Bangle in yellow gold, white gold with enamel set with diamonds and yellow sapphires; Cobalto Capri Bangle in yellow gold, white gold with enamel set with diamonds and pink sapphires. POA.

Ginepro Capri Bangle in yellow gold, white gold with enamel set with diamonds, yellow sapphires and Paraiba tourmalines. POA.



Oltremar Capri Bangle in yellow gold, white gold with enamel set with diamonds and yellow sapphires. POA.



MAGAZINES &
INTERNATIONAL PRESS

NEWSSTAND

press reader



WATCHES



FASHION & JEWELLERY



LIFESTYLE & TRAVEL



FINANCE & MARKETS



HOME & STYLE



SPORTS & LUXURY CARS



JETS & YACHTS

www.boucheron.com

Model wearing the new Wladimir the Cat Ring and Bracelet in white gold paved with diamonds and set with tsavorite and black sapphires. POA.



BOUCHERON's ever-expanding animal family and permanent tribute to the feather motif are both welcoming new members this fall-winter. Let's just start by saying that this new offering confirms the creative breadth of BOUCHERON's sphere. From the figurative jewels (such as these new ones) to the Carte Blanche collection's unbridled exploration each July, BOUCHERON is possibly the only jeweller whose repertoire is endless. Yet this balancing act never sways from the fundamentals set by the founder Frédéric Boucheron: a fascination with the natural world underpinned by a fierce pioneering spirit.

That said, the BOUCHERON menagerie counts two new members: the panda (holding a green tourmaline) and the cicada (a necklace, brooch and ring whose body is an aquamarine). The current residents from the **Animaux Collection** will be celebrated in the fall with the 'Wild Within' campaign, where pandas, zebras, leopard cats, deer, chickadees and cicadae will be met. For further delight, the Maison's iconic cat Wladimir is dressed in a new robe (all white diamonds with a collar of green tsavorites) and it comes in three new designs: a bracelet, a pair of ear studs and a multiwear necklace.

As for the peacock feather motif (which appeared at BOUCHERON for the first time in the 1860s), it fully embraces lifelikeness. Firstly, there is an emphasis on light with openwork throughout; secondly, movement (*"a special system that liberates each strand to sway independently"*); thirdly, colour with a perfect gradation of metallic blue-green hues; and lastly, lightness thanks to anodized titanium. Wearing these new bejewelled feathers, you may feel like a beautiful peahen.

MAGAZINES &
INTERNATIONAL PRESS

NEWSSTAND

press reader



WATCHES



FASHION & JEWELLERY



LIFESTYLE & TRAVEL



FINANCE & MARKETS



HOME & STYLE



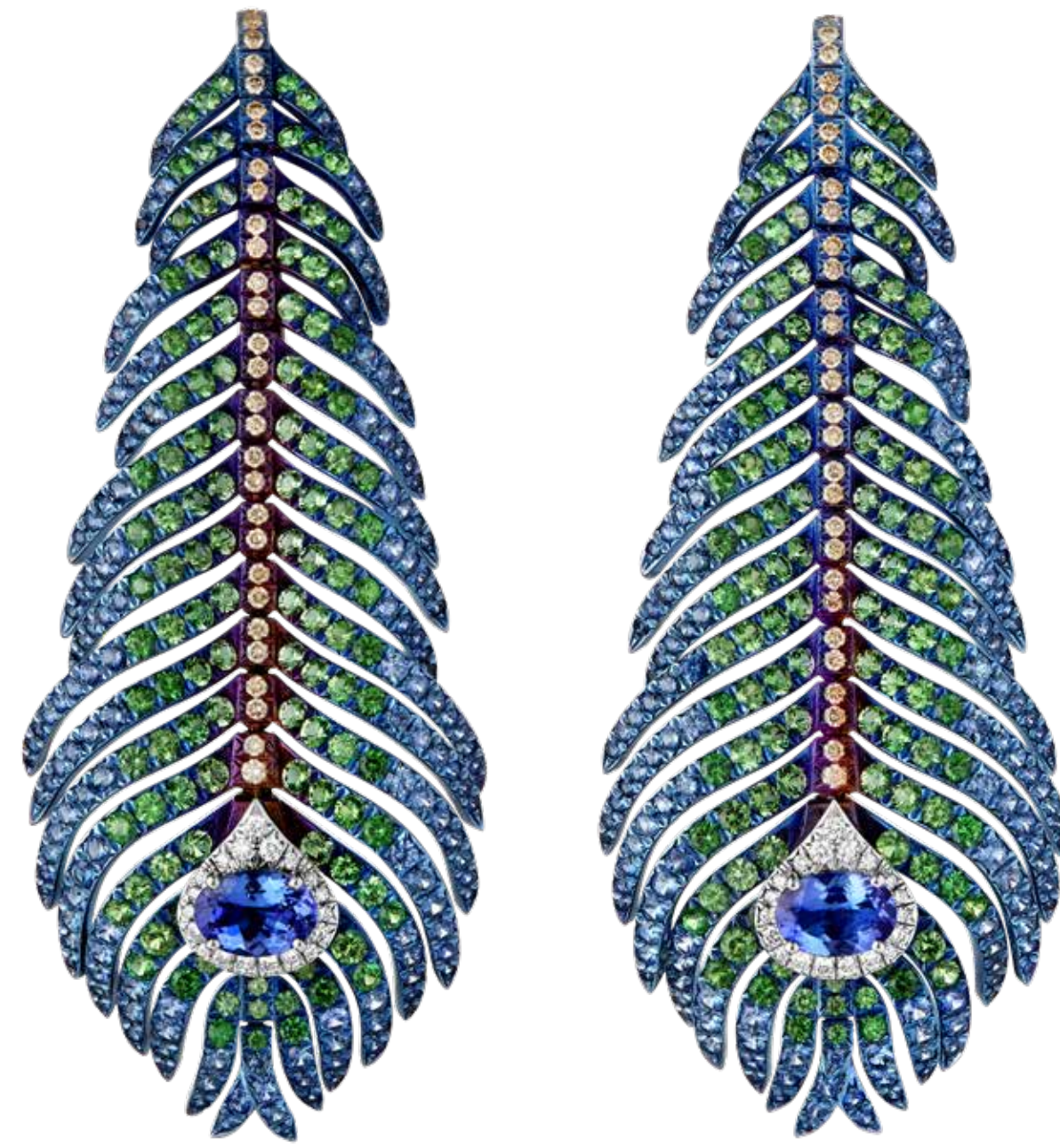
SPORTS & LUXURY CARS



JETS & YACHTS

www.boucheron.com

Plume de Paon large pendant Earrings set with an oval tanzanite, paved with diamonds, sapphires and tsavorites, in white gold and titanium. POA.



Panda Ring in white gold paved with diamonds, black sapphires and tsavorites, set with a green tourmaline. POA.



Cicada Ring in white gold and diamonds, set with an aquamarine. POA.



Plume de Paon Necklace, set with an 3.94-carat oval tanzanite, paved with diamonds, sapphires and tsavorites, in white gold and titanium. POA.



Now an all-white diamond version exists and it is even more timeless. Six pieces with the possibility to mix and match.

MAGAZINES &
INTERNATIONAL PRESS

NEWSSTAND

press reader



WATCHES



FASHION & JEWELLERY



LIFESTYLE & TRAVEL



FINANCE & MARKETS



HOME & STYLE



SPORTS & LUXURY CARS



JETS & YACHTS



TURN VISION
INTO LEGACY



BNP PARIBAS
WEALTH MANAGEMENT

The bank
for a changing
world

MAGAZINES &
INTERNATIONAL PRESS

NEWSSTAND

press reader



WATCHES



FASHION & JEWELLERY



LIFESTYLE & TRAVEL



FINANCE & MARKETS



HOME & STYLE



SPORTS & LUXURY CARS



JETS & YACHTS

www.cartier.com

Dohara reversible
Necklace in white gold
set with rock crystal,
coloured lacquer and
diamonds; **Le Voyage
Recommencé**. POA.

And off we travel with a new chapter of CARTIER's **Voyage Recommencé!** When the first section appeared earlier this year, we were once again bowled over by CARTIER's reinterpretation of its signatures. Chapter II is even more dazzling and the Dohara neckpiece can best illustrate what is at stake. Inspired by Mughal jewellery, this is probably the first ever high jewel to be reversible. It indeed offers the best of both worlds: an all-white gold and diamond necklace on one side (with sensational rose-cut rock crystal feathers), it reveals a delicate lacquer work (of blue, red and green) on those feather shapes when flipped. The peahen and peacock in one stroke of genius! The Bailong brooch propels us into Chinese culture with a curvy dragon (albeit with its serrated open mouth) which is holding a yellow diamond while perched on an octagonal green tourmaline. The sizeable stone is framed by a geometric diamond motif. 'Imperial' is the Bailong brooch.


MAGAZINES &
INTERNATIONAL PRESS

NEWSSTAND
press reader


WATCHES



FASHION & JEWELLERY



LIFESTYLE & TRAVEL



FINANCE & MARKETS



HOME & STYLE



SPORTS & LUXURY CARS



JETS & YACHTS

www.cartier.com

Bailong Brooch in white gold set with one 30.11-carat green tourmaline, yellow diamonds, and diamonds; **Le Voyage Recommencé**. POA.



Pineas Necklace in rose gold set with emeralds, coral and diamonds; **Le Voyage Recommencé**. POA.



CARTIER's exquisite goldsmithing is on full display with the Pineas lariat necklace. Celebrating the colours of South America (yellow, red and green), it is composed of overlapping rows of small pine cone motifs. As the eyes travel towards the bottom, attention is caught by the red coral and emerald strokes that appear on the lower pine cones. From these, hangs a flurry of yellow diamond beads, followed by briolette-cut yellow diamonds, then more yellow beads culminating in two hexagonal emeralds. These elaborate tassels can be detached from the neck-piece and worn as earrings.

MAGAZINES &
INTERNATIONAL PRESS

NEWSSTAND

press reader



WATCHES



FASHION & JEWELLERY



LIFESTYLE & TRAVEL



FINANCE & MARKETS



HOME & STYLE



SPORTS & LUXURY CARS



JETS & YACHTS

www.cartier.com

Eximis Ring in white gold set with one 4.15-carat yellow-brown Fancy diamond and diamonds; **Le Voyage Recommencé**. POA.



Detail of the Mirragio Necklace in white gold set with blue sapphires, emeralds, onyx and diamonds; **Le Voyage Recommencé**. POA.



Among other important skills, CARTIER excels in geometric kinetics, which often results in trompe l'oeil. Enter the Mirragio necklace that cannot be reduced to the exceptional vertical line of Ceylon blue sapphires around which everything is structured. “On either side, sapphire and emerald motifs form a symmetrical grid punctuated by graphic onyx details. This structure reveals an organisation in distinct planes, like architecture”, the team explains. Just keep in mind that eighteen sapphires and thirty-six emeralds were cut into triangles by the Maison lapidaries...at CARTIER, the design prevails and nothing is too risky.

In this brief overview of Chapter II, let's conclude with the Eximis ring. It encapsulates everything that has been previously described. The starting point is a rare 4.15-carat yellow-brown Fancy diamond with a bespoke cut. Like magma erupting out of lava, it emerges from a cracked dome made of triangular diamonds, themselves emanating from angular pieces set with round brilliant-cut diamonds. The tiered structure has a purpose: letting light penetrate the depth of the ring so as to enhance the central diamond...at CARTIER, fascinating as it is, the design always serves a concept.

MAGAZINES &
INTERNATIONAL PRESS

NEWSSTAND

press reader



WATCHES



FASHION & JEWELLERY



LIFESTYLE & TRAVEL



FINANCE & MARKETS



HOME & STYLE



SPORTS & LUXURY CARS



JETS & YACHTS

F.P. JOURNE

Invenit et Fecit

"I invented it and made it"



Ref. RQ - Chronomètre à Résonance

The only wristwatch in the world featuring acoustic resonance.
Manual winding movement in 18K rose Gold, Geneva made

The Boutiques

Tokyo Hong Kong Geneva Paris New York Miami Los Angeles London Beirut Kyiv Dubai

fpjourne.com

MAGAZINES &
INTERNATIONAL PRESS

NEWSSTAND

press reader



WATCHES



FASHION & JEWELLERY



LIFESTYLE & TRAVEL



FINANCE & MARKETS



HOME & STYLE



SPORTS & LUXURY CARS



JETS & YACHTS

www.elietop.com

One-of-a-kind Snake Ring in yellow gold and distressed silver set with diamonds and yellow diamonds; **Twist** collection. POA.



One-of-a-kind Snake Earring in yellow gold and distressed silver set with rubies, diamonds and yellow sapphires; **Twist** collection. POA.



Elie Top is here to cast a spell on us. With his latest collection called **Twist**, sinuosity is the main hero. And as sinuosity goes, its best ambassador is undoubtedly the snake motif. “*And the charmer’s flute begins to sing*” is the start of Elie Top’s introductory poem to the collection. How the snake coils and emerges from the basket, stands straighter as it stiffens, ready to strike...This is probably why Elie Top has put an emphasis on the snakes’ head, which is bigger than the snakes’ body in all six designs (four rings, including two mini rings, and two pairs of earrings). Having larger heads also means that the jeweller was able to set them with precious gemstones (yellow sapphires for the eyes, rubies, emeralds or green sapphires for the crown and *pavés* of brilliant-cut diamonds for the skin). Looking at the lively tails in yellow gold, Elie Top’s snakes could be rattlesnakes.

Naturally, Elie Top’s signature of yellow gold paired with distressed silver (i.e. blackened) is on show, notably as alternating coloured scales or as yellow gold for the dorsal spines and dark silver for the scales. All of the snake designs are one-of-a-kind pieces.

MAGAZINES &
INTERNATIONAL PRESS

NEWSSTAND

press reader



WATCHES



FASHION & JEWELLERY



LIFESTYLE & TRAVEL



FINANCE & MARKETS



HOME & STYLE



SPORTS & LUXURY CARS



JETS & YACHTS

www.elietop.com

Model wearing the Pendant Twist Necklace in yellow gold and distressed silver shown with the separately sold Trêfle Twist Charm in yellow gold and distressed silver set with diamonds; **Twist** collection. POA.

Sinuosity is also represented by the rope motif in the Twist collection and for seven designs (a ring, a pair of earring, a bracelet and two necklaces accompanied by two charms). Bearing the name of the collection, these Twist designs can be ordered on demand. Here, the yellow gold is for the rope while the distressed silver is used for the ties and diamond-set stoppers (bead-shaped) – or vice versa... besides, it is as if Elie Top has invented his own repertoire of knots: an intricate symmetrical pattern, most fascinating when gold ropes evoke chandelier earrings. The clover or key charms add a talismanic touch to the long chain necklace.



MAGAZINES &
INTERNATIONAL PRESS

NEWSSTAND

press reader



WATCHES



FASHION & JEWELLERY



LIFESTYLE & TRAVEL



FINANCE & MARKETS



HOME & STYLE



SPORTS & LUXURY CARS



JETS & YACHTS

www.graff.com

Important Necklace in white gold set with one rare 30.28-carat Fancy Intense Yellow pear-shaped diamond, oval diamonds and white diamonds (for a total carat weight of 167.85); **Sunrise Collection**. POA.

One love affair was on full display this July in Paris; that of Laurence Graff for yellow diamonds. It is no secret that these rare gemstones have always had an important place in any GRAFF new collection... but certainly not as much as in the **Sunrise** collection, which is a full tribute to the rarest of these nitrogen-rich gemstones. The hero piece features indeed a whopping 30.28-carat Fancy Intense Yellow pear-shaped diamond. Size- and colour-wise, the gem is exceptional. In true GRAFF style, the stone is highlighted by seventeen oval-shaped yellow diamond, placed as rays all around. Motifs from the **Tribal** collection – such as the paved half-moon shape or the pear-shaped diamond drops fitted with a white gold halo – run through this offering.

The **Tribal** shield-like aesthetic is prevalent in other creations: an array of neckpieces and earrings in which yellow diamonds take centre stage, and from which they cascade. Choice is far from easy when it comes to choose among all the solitaire rings (Asscher, oval or emerald) that are uniquely GRAFF: minimalist elegance meets perfect balance. Interestingly, I feel that the line of round shaped yellow diamond (increasing in size) interspersed with pear-shaped white diamonds is the other hero piece. A *rivière* crew necklace that is a simple, effective statement for the power of yellow diamonds.


MAGAZINES &
INTERNATIONAL PRESS

NEWSSTAND

press reader



WATCHES



FASHION & JEWELLERY



LIFESTYLE & TRAVEL



FINANCE & MARKETS



HOME & STYLE



SPORTS & LUXURY CARS



JETS & YACHTS

www.graff.com

Fancy Vivid Yellow (5.33cts) and White Diamond Ring (6.72cts), set in white gold; **Sunrise Collection**. POA.



Fancy Vivid Yellow and White Diamond Necklace (64.40cts) set in white gold; **Sunrise Collection**. POA.



Tribal Fancy Yellow and White Diamond Tribal Necklace (84.57cts) set in white gold; **Sunrise Collection**. POA.



Fancy Vivid Yellow and White Diamond Earrings (17.01cts) set in white gold; **Sunrise Collection**. POA.

MAGAZINES &
INTERNATIONAL PRESS

NEWSSTAND

press reader



WATCHES



FASHION & JEWELLERY



LIFESTYLE & TRAVEL



FINANCE & MARKETS



HOME & STYLE



SPORTS & LUXURY CARS



JETS & YACHTS

www.graff.com

Rianne Van Rompaey wearing the Pavé Butterfly Diamond Necklace in white gold set with 15.64 carats of diamonds; the Triple Pavé Butterfly Diamond Ring in white gold set with 4.70 carats of diamonds; the Triple Pavé Butterfly Diamond Bracelet in white gold set with 5.50 carats of diamonds and the Pavé Butterfly Diamond Drop Earrings in white gold set with 2.50 carats of diamonds; **Graff Butterfly Collection**. POA.



Now if you contemplate building your way towards GRAFF's most exceptional iterations, you could start with the new **Graff Butterfly Collection** starring Rianne Van Rompaey - a fresh face for the luxury house. In the new campaign, which is styled by Emmanuelle Alt (former editor of Vogue Paris) and captured by photographer Mikael Jansson, "*Rianne's story plays out at the legendary Villa La Vigie against the backdrop of the Cote d'Azur in France*", the team says. The collection introduces a hybrid between butterfly and flower; a stylised four-wing design in all white gold paved with diamonds. For even more lightness, some are cut-out, leaving just the diamond-paved silhouette to act as skin tattoos. It has the same youthfulness as the **Tilda's Bow Collection**, yet it feels 'cooler'. As much wearable during the day as it is during the night, **Graff Butterfly** has all the hallmarks of high jewellery minus the gravitas.

MAGAZINES &
INTERNATIONAL PRESS

NEWSSTAND

press reader



WATCHES



FASHION & JEWELLERY



LIFESTYLE & TRAVEL



FINANCE & MARKETS



HOME & STYLE



SPORTS & LUXURY CARS



JETS & YACHTS



WATCHES



FASHION & JEWELLERY



LIFESTYLE & TRAVEL



FINANCE & MARKETS



HOME & STYLE



SPORTS & LUXURY CARS



JETS & YACHTS

Discover more

探索更多内容



DUCRU-BEAUCAILLOU

THREE CENTURIES OF BEAUX CAILLOUX* IN SAINT-JULIEN

(*BEAUTIFUL STONES)

www.gucci.com

Earrings | white gold set with two important fan-shaped emeralds, tourmalines and diamonds;
GUCCI Allegoria. POA.



*“As an allegory of the cycle of the four seasons, **GUCCI Allegoria** magnifies nature’s ephemeral beauty and its relentless transformability as the collection plays with antique stones and eclectic cuts”,* the team explains.

A GUCCI tradition despite its rather ‘young’ high jewellery category, multiplying various and rare cuts while picking from most of the colour spectrum (gem-wise) is a winning formula. A necklace pairs a flurry of oval-shaped tourmalines in shade of pastels, culminating at its crux with a white gold lion head holding in its mouth three long tassels made of the same melting pot of coloured tourmalines. Moreover, pieces featuring saturated colours show that members of the creative team are first and foremost talented colourists. A pair of chandelier earrings showcases oval-shaped vivid Paraiba tourmalines from which three tassels hang. Each is finished with a pear-shaped yellow sapphire, rubellite and green tourmaline. Crimson red is associated with ochre and bright yellow in another design, while the same bright yellow also comes with a graded camaieu of green, peach, powder pink and orange-red in a necklace....the combinations are endless and always masterful.

“Fan, briolette, paisley and kite shapes all feature, as speckles of baguette diamonds add an additional touch of light, setting everything into motion”. Lion heads, bows and hearts still feature heavily in this collection. A pair of earrings are designed around two jaunty, fan-shaped emeralds that are perfectly matched for colour and saturation, totalling 18 carats, from which a mesh of diamonds and multi-coloured tourmalines cascade. Symmetry on the top, asymmetry on the bottom.

MAGAZINES &
INTERNATIONAL PRESS

NEWSSTAND
press reader


WATCHES



FASHION & JEWELLERY



LIFESTYLE & TRAVEL



FINANCE & MARKETS



HOME & STYLE



SPORTS & LUXURY CARS



JETS & YACHTS

www.gucci.com

Necklace in 18K yellow gold set with rubellites, mandarin garnets and diamonds; **GUCCI Allegoria**. POA.



Lionhead Necklace in 18K yellow gold set with beryls, spinels, peridots and diamonds; **GUCCI Allegoria**. POA.



Jacket Earrings in 18K white gold set with Paraiba tourmalines, chrysoberyls, spinels and diamonds; **GUCCI Allegoria**. POA.



Bracelet in 18K yellow gold set with mandarin garnets, sapphires and diamonds; **GUCCI Allegoria**. POA.

MAGAZINES &
INTERNATIONAL PRESS

NEWSSTAND

press reader



WATCHES



FASHION & JEWELLERY



LIFESTYLE & TRAVEL



FINANCE & MARKETS



HOME & STYLE



SPORTS & LUXURY CARS



JETS & YACHTS

www.gucci.com

Necklace in 18K white gold and blue enamel set with one yellow sapphire and diamonds; **GUCCI Allegoria**. POA.

“One-of-a kind, old mine, European-cut stones imbue **GUCCI Allegoria** with a unique vintage allure, evoking a time when gemstones were cut by hand and their larger facets cleaved in candlelight”. Created primarily from 1890-1930, European cuts characterised the art deco period, and are the predecessors to today’s round brilliant-cut diamond. A great example of 10 carat is the hero of a floral motif necklace, the chain festooned with opal engraved beads. A matching pair of earrings features two old European cut diamonds of more than 12 carats each, encircled by flower-cut opals, as baguette and paisley diamonds enrich the design.

Travelling through the four seasons as well as time is indeed **GUCCI Allegoria’s** mission. A majestic *sautoir* with a sizeable yellow sapphire medallion is made of a neo-classical chain whose links are white diamonds interlinked by navy blue enamel ingots. The roaring twenties hover over the piece. What about the floral necklace mixing ruby beads with fire opals? Is it reminiscent of the 60s or the 70s? The playful back and forth travel between eras is very modern in essence. Through its high jewellery, GUCCI is reviving a sense of glamour that does not take itself too seriously. It is mesmerising and party-mood inducing at the same time.


MAGAZINES &
INTERNATIONAL PRESS

NEWSSTAND

press reader



WATCHES



FASHION & JEWELLERY



LIFESTYLE & TRAVEL



FINANCE & MARKETS



HOME & STYLE



SPORTS & LUXURY CARS



JETS & YACHTS



TAP TO DISCOVER >>>

MAGAZINES &
INTERNATIONAL PRESS

NEWSSTAND

press reader



WATCHES



FASHION & JEWELLERY



LIFESTYLE & TRAVEL



FINANCE & MARKETS



HOME & STYLE



SPORTS & LUXURY CARS



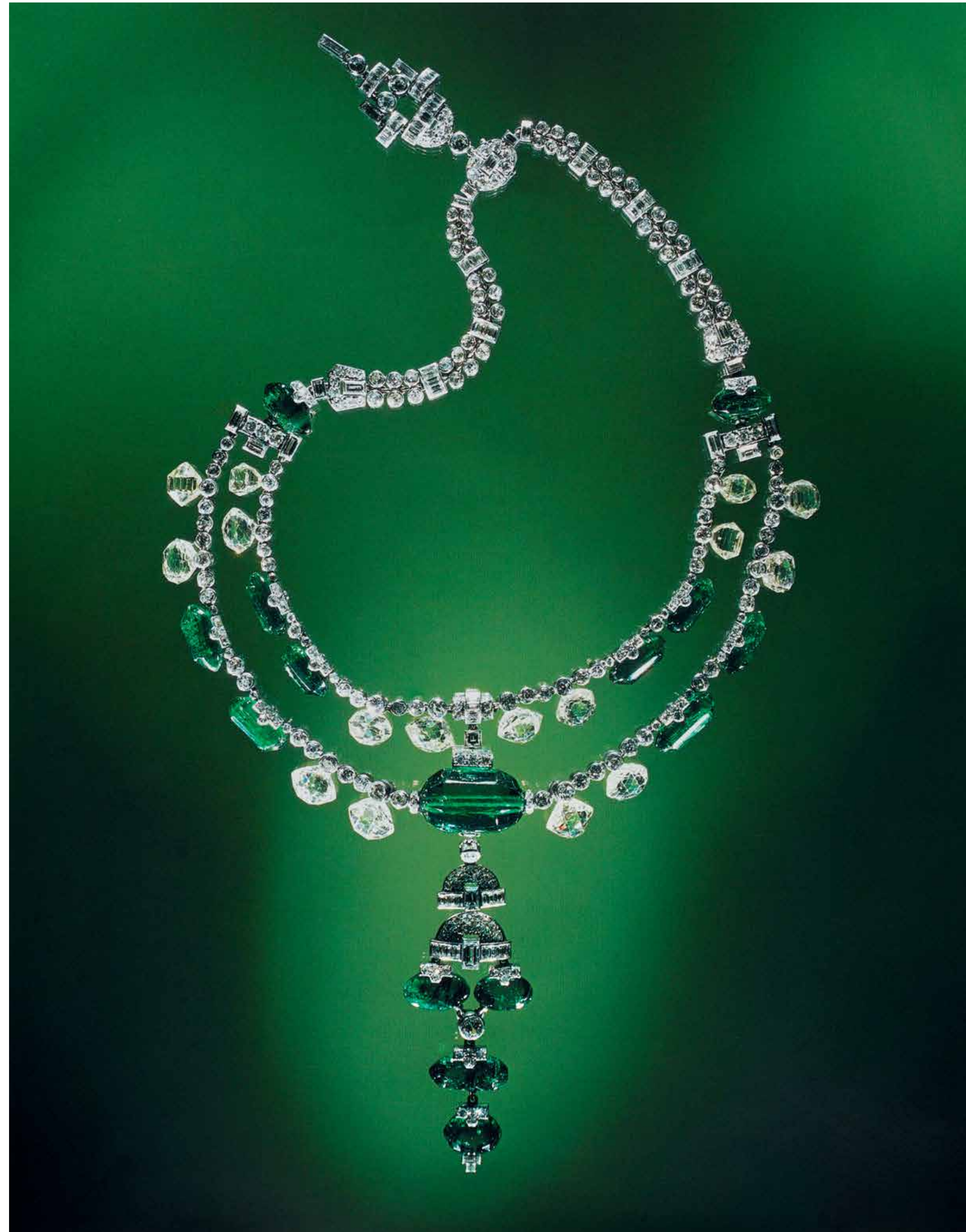
JETS & YACHTS

www.harrywinston.com

The excellent reputation of HARRY WINSTON does not need any reminder. Yet, the latest high jewellery collection, **Royal Adornments**, is precisely that...a spectacular reminder that *“from one-of-a-kind commissions for important royal occasions, to beloved gemstones and jewels that graced tiaras and necklaces, the House of Harry Winston has been linked with royalty since its earliest days”*, the team points out. Superlatives can only describe HARRY WINSTON: how founder Winston acquired many famous pieces with royal provenance, including the Arcots, the Hope Diamond, and jewels from Marie Antoinette and Princess Eugenie, over the years; or how he earned nicknames such as ‘King of Diamonds’ and ‘Rare Jeweller of the World’.

Consisting of thirteen suites, the **Royal Adornments** collection draws references to important jewels of royal provenance that have passed through the hands of Harry Winston; and so it ends up being as much historical as contemporary. Each suite is an opportunity to revisit the past (be in awe of the most exquisite high jewels ever made) and connect with HARRY WINSTON’s present (how the custodian creative team respectfully interpret each wonder to create new ones). **Royal Adornments** is an invitation to partake in the apex of jewellery aristocracy.

Emerald and Diamond Necklace of the late Maharaja of Indore (property of HARRY WINSTON).



MAGAZINES &
INTERNATIONAL PRESS

NEWSSTAND

press reader



WATCHES



FASHION & JEWELLERY



LIFESTYLE & TRAVEL



FINANCE & MARKETS



HOME & STYLE



SPORTS & LUXURY CARS



JETS & YACHTS

www.harrywinston.com

The Baroness Necklace (part of a suite with matching earrings) in platinum set with one 4.33-carat square emerald-cut emerald, 104 pear-shaped diamonds, and 294 mixed-cut diamonds; **Royal Adornments**. POA.

Inspired by the emerald and diamond necklace of the late Maharaja of Indore that Harry Winston acquired in 1948, the Baroness Suite draws from the verdant power of emeralds to honour its predecessor. *“It features rows of diamonds and emeralds that are anchored by a 4.33 carat square emerald-cut emerald. A row of 104 pear-shaped emeralds, selected for their colour consistency and brilliance, are nestled between interlacing rows of 294 mixed-cut diamonds – round, pear- and marquise-shaped – which are all set in near invisible platinum settings”,* the teams says.



MAGAZINES &
INTERNATIONAL PRESS

NEWSSTAND

press reader



WATCHES



FASHION & JEWELLERY



LIFESTYLE & TRAVEL



FINANCE & MARKETS



HOME & STYLE



SPORTS & LUXURY CARS



JETS & YACHTS

www.harrywinston.com

The Crown Ring in platinum set with one 12.12-carat emerald-cut blue sapphire, and 8.8 carats of mixed cut diamonds; **Royal Adornments**. POA.



In peerage terms, the highest rank is ‘duke’. In HARRY WINSTON **Royal Adornments** collection, the ranking of titles does not really matter since they all apply to new renditions stemming from exceptional origins. What matters though is that the collection lays down the base of a female royal cast. The Countess Necklace pays homage to one of Catherine the Great’s most beloved jewels, a 337.10-carat deep blue sapphire, also acquired by Winston in the late 40s. With one 30.27-carat octagonal-cut sapphire as a medallion, and an additional eleven sapphires that are evenly dispersed amongst clusters of brilliant diamonds, it is as if the old sizeable gemstone had been split into many cerulean pieces. The rarest colour-matched emeralds of a total of 36.31 carats compose the Court Earrings, an on-par homage to the “*finest emeralds (he) had ever seen*” from a necklace belonging to the Maharajah of Nawanagar (also purchased by Winston). In a reversal of roles, the Dame Necklace and Earrings – inspired by Dame Elizabeth Taylor’s *parure* set with an exceptional pink conch pearl of 45 carats – see the necklace becoming finer and the earrings bolder (chandelier style) compared to the original suite. While the earrings are just delectable with the pairing of pink conch pearls and rubies, the diamond chain necklace features a 41.95-carat pink conch (as extraordinary in size and with an even darker pink colour as the original). The Baldwin Ruby (‘pigeon’s blood’ of 25cts) from the acquisition by Harry Winston of the estate of mining tycoon, Lucky Baldwin in 1930 is the starting point for the Heiress Necklace. Consisting of three rows of gemstones – two rows of round brilliant diamonds (more than 65cts), and one row of side-set vivid red oval-shaped rubies (68cts) that culminate in a V-shape formation with a 5.26-carat pear-shaped ruby central stone – the necklace is a show-stopper.

The Countess Necklace in platinum set with one 30.27-carat octagonal-cut blue sapphire, 11 blue sapphires, and mixed-cut white diamonds; **Royal Adornments**. POA.


MAGAZINES &
INTERNATIONAL PRESS

NEWSSTAND

press reader



WATCHES



FASHION & JEWELLERY



LIFESTYLE & TRAVEL



FINANCE & MARKETS



HOME & STYLE



SPORTS & LUXURY CARS



JETS & YACHTS

www.harrywinston.com

The Dame Earrings (part of a suite with the Dame Necklace) in platinum set with 12 pink conch pearls, two oval-shaped rubies and mixed-cut diamonds; **Royal Adornments**. POA.



The Court Earrings in platinum and yellow gold set with two emerald-cut emeralds (total of 36.31 carats), and mixed-cut diamonds; **Royal Adornments**. POA.



The Heiress Necklace in platinum and yellow gold set with one 5.26-carat pear-shaped ruby, 68 carats of vivid red oval-shaped rubies and 65 carats of round brilliant-cut diamonds; **Royal Adornments**. POA.



The transformable Fifth Avenue Tiara in platinum set with mixed-cut diamonds; **Royal Adornments**. POA.



MAGAZINES &
INTERNATIONAL PRESS

NEWSSTAND

press reader



WATCHES



FASHION & JEWELLERY



LIFESTYLE & TRAVEL



FINANCE & MARKETS



HOME & STYLE



SPORTS & LUXURY CARS



JETS & YACHTS

www.harrywinston.com

Follow the Marquess Necklace, whose three rows of diamonds, totalling more than 100 carats, were handcrafted as individual necklaces. The most complex of the rows, the middle row, consists exclusively of baguette-cut diamonds, as a nod to the ribbon necklace the Indore Pears were once set on (a reference to the two pear-shaped diamonds once owned by the Maharajah of Indore and later purchased then sold to royals by Winston). The Princess Suite is a HARRY WINSTON chromatic signature for its association of deep blue sapphires with aquamarines. It features clusters of marquise-shaped stones recalling the same butterfly motif as the “Sweet 16” necklace (a 1977 commission for a young princess). Blue remains in the exquisite collar-style necklace and matching earrings of the Viscountess Suite. A 25.02-carat octagonal-cut sapphire presides over an additional 20.25 carats of round and pear-shaped sapphires that graduate from light to dark in colour. Ingenuity is behind the Idol Necklace. How to evoke the Idol’s Eye 70.20-carat flawless diamond? With a stunning 12.08-carat cushion-cut Paraiba tourmaline medallion which is highlighted by a v-motif holding the round brilliant-cut double strand.

Imperial, papal?...the Crown Ring is set with an intoxicating 12.12-carat emerald-cut blue sapphire that erupts from a white diamond cocoon of 8.8 carats. The King Brooches celebrate the day when Harry Winston was called the ‘King of Diamonds’ for the first time in print. One is an all-white diamond affair, the other a diamond and emerald version. Both portray an arc shape like ‘D’ for diamond. And to conclude, the epitome of any ‘Royal Adornments’, the transformable Fifth Avenue Tiara (as much an homage to the flagship boutique on fifth avenue, as a tribute to the Westminster Tiara acquired in 1959).

The Princess Earrings (part of a suite with the Princess Necklace) in platinum set with blue sapphires, aquamarines and diamonds; **Royal Adornments**. POA.



The Idol Necklace in platinum set with one 12.08-carat cushion-cut Paraiba tourmaline, and mixed-cut diamonds; **Royal Adornments**. POA.

MAGAZINES & INTERNATIONAL PRESS

NEWSSTAND

press reader



WATCHES



FASHION & JEWELLERY



LIFESTYLE & TRAVEL



FINANCE & MARKETS



HOME & STYLE



SPORTS & LUXURY CARS



JETS & YACHTS

<https://jacobandco.com>

Only four months after introducing its ground-breaking Astronomia Revolution, JACOB & CO. cranks up the innovation to the max, yet again. Astronomia Revolution 4th Dimension is an amplified and up-graded take on the one-minute rotating movement with triple-axis tourbillon at the end of a two-arm carousel. It rotates every 60 seconds. Developed, released and signed jointly with Jacob & Co.'s main movement partner Concepto Watch Factory, Astronomia Revolution 4th Dimension features a four-axis flying tourbillon. As much a timepiece as a high jewel, it features a piece that lies underneath the spinning carousel and that is a rose gold structure crafted like a large piece of high jewelry. JACOB & CO. has set this hollowed-out structure with 35 gemstones, chosen among 7 types of gems. Each one is bespoke-cut to form a pattern of coloured light. Each one is placed with its culet side up. The layout purposely feels random, creating a jagged expanse.

This watchmaking achievement is the brainchild of Jacob & Co. and Concepto Watch Factory's founder, master watchmaker and CEO Valérien Jaquet. Astronomia Revolution 4th Dimension is a unique piece, which will be put up for auction on November 5th and will benefit Only Watch's fight against Duchenne Muscular Dystrophy.


MAGAZINES &
INTERNATIONAL PRESS

NEWSSTAND
press reader


WATCHES



FASHION & JEWELLERY



LIFESTYLE & TRAVEL



FINANCE & MARKETS



HOME & STYLE



SPORTS & LUXURY CARS



JETS & YACHTS

www.louisvuitton.com

A few months following the spectacular presentation of LOUIS VUITTON's **Deep Time** high jewellery collection, part one, in one of the finest open-air theatres, Odeon of Herodes Atticus, at the foot of Athens' Parthenon, the time has come to reflect. What strikes most about **Deep Time** is twofold: the amping up of proportions and carat weights that evoke the theatricality of costume jewels and the steadfast commitment to those gemstones' quality / rarity. That it is the largest LOUIS VUITTON high jewellery to date with 170 unique pieces (95 for Chapter One alone) is reflected in the visual spectacle: **Deep Time** is the essence of the bold and the beautiful – no pun intended – and a tribute to the riches of the earth. It is *“an ultimate and profound voyage, spanning the birth of the planet to the creation of life”*, the team says. It is as if Francesca Amfitheatrof, Artistic Director for Watches and Jewellery, and her team wanted to emphasise the exceptionality of precious gemstones, one of the many wonders naturally occurring. Hence, the geological / botanical denomination of the different suites. The best representative of the above is probably the Seed necklace and earrings. A single strand necklace with a gold and diamond trellis pattern which nods to Fossils, is magnified either side by 13 juicy rubellite and spessartite garnet cabochons totalling 256-carats. The bountiful size of the pieces is arresting.

Let's now look at Fossils that is identified foremost by three strands. Each is a worthy innovation on its own. Mixed cuts set in intricate grids of gold, the play between light and shade, between full and void...The complexity is just insane. The hollowed-out strand is the one used also for the Seed suite. It reminds me of the LOUIS VUITTON ready-to-wear sheer detail beaded tank dress from this Fall Winter season. The gold tubes are worked as part honeycombs, part alveolus, and white diamonds are peppered here and there.

Model wearing the Seeds Necklace in yellow gold and platinum set with one pear-cut pink cabochon tourmaline rubellite of 52.75 carats, one oval-cut spessartite mandarin garnet of 20.27 carats from Nigeria, six oval-cut rubellites for 146.07 carats, six oval-cut cabochon spessartite mandarin garnets for 57.43 carats and diamonds; with the Seeds Earrings in yellow gold and platinum set with two oval-cut pink rubellite tourmalines for 48.01 carats and diamonds; **Deep Time**. POA.


MAGAZINES &
INTERNATIONAL PRESS

NEWSSTAND

press reader



WATCHES



FASHION & JEWELLERY



LIFESTYLE & TRAVEL



FINANCE & MARKETS



HOME & STYLE



SPORTS & LUXURY CARS



JETS & YACHTS

www.louisvuitton.com

Origin Necklace in white gold set with one brilliant-cut diamond of 10.21 carats D FL and diamonds; **Deep Time.** POA.

Fossils Necklace in platinum and yellow gold set with one emerald-cut blue sapphire of 27.83 carats from Sri Lanka, one LV Monogram Star-cut diamond of 5.52 carats D IF and diamonds; transformable necklace; **Deep Time.** POA.



Wave Necklace in white gold set with one oval-cut « Royal Blue » sapphire of 40.80 carats from Sri Lanka, one LV Monogram Flower-cut diamond of 6.19 carats D IF and diamonds; detachable sapphire; **Deep Time.** POA.

MAGAZINES &
INTERNATIONAL PRESS

NEWSSTAND

press reader



WATCHES



FASHION & JEWELLERY



LIFESTYLE & TRAVEL



FINANCE & MARKETS



HOME & STYLE



SPORTS & LUXURY CARS



JETS & YACHTS

www.louisvuitton.com

The Gondwana, Myriad, Fossils, Bones and Plants suites successfully carry on or renew the way LOUIS VUITTON's symbols are featured (V motif, LV monogram Star and Flower cuts). The hero piece is without a doubt the Wave high collar necklace, whose wave design curling under one's neck is mind-boggling. *"A display of liquefied diamonds, the V shape is crafted from an exceptional design of alternating small and large bands of pavé and baguette stones, which meet to hold a flawless 6.19-carat LV Monogram Flower-cut diamond that dangles with an incredible, detachable, oval-cut 40.80-carat sapphire from Sri Lanka"*, the team explains.

As we have seen throughout each collection, mastering curves and movement has become one of the house's signatures. Most recently, the best testament to that fact was the Fantasy suite from last year's Spirit collection. Now here come two sets which push the swirl motif to new heights. Origin with its infinite whirlwind zooming in on a subtle V signature and chevron patterns that ultimately lead to a 10.21-carat D flawless brilliant-cut diamond, one of **Deep Time's** most important stones. And there is Flight (the largest suite with 15 pieces), which as per its name, features a wreath of feathers that is crowned by one 4.17-carat ruby for the main necklace.

Also worth mentioning is the Bones bib-style creation which is the most complex necklace ever made in LOUIS VUITTON's history. A structural piece set with a 43.58-carat opal from Australia, a pear-cut 20.93-carat Paraiba tourmaline from Mozambique and a total of 91.74-carats of emerald-cut tanzanites from Tanzania.

Model wearing the Plants Bracelet in yellow gold and platinum set with three brilliant-cut rubies (3.47cts) from Mozambique, three brilliant-cut emeralds (1.48cts) from Zambia, seven LV Monogram Star- and Flower-cut (5.19cts), three round-cut diamonds (1.90cts) and diamonds; the Plants Ring in platinum and yellow gold set with one brilliant-cut emerald (7.87cts) from Zambia and diamonds; the Plants Necklace, in platinum and yellow gold set with eight brilliant-cut rubies (10.06cts) from Mozambique, nine brilliant-cut emeralds (6.67cts) from Zambia, eleven LV Monogram Star- and Flower-cut diamonds (16.30cts), 32 round-cut diamonds and diamonds; **Deep Time**. POA.


MAGAZINES &
INTERNATIONAL PRESS

NEWSSTAND

press reader



WATCHES



FASHION & JEWELLERY



LIFESTYLE & TRAVEL



FINANCE & MARKETS



HOME & STYLE



SPORTS & LUXURY CARS



JETS & YACHTS

www.louisvuitton.com

Model wearing the Rupture Necklace in yellow gold and platinum set with one oval-cut opal of 15.02 carats from Mexico, one triangle-cut yellow sapphire of 13.81 carats from Sri Lanka, fourteen oval-cut opals for 17.75 carats from Mexico, 33 round-cut zircons for 163.71 carats and diamonds; transformable necklace; **Deep Time.** POA.



Lastly, one of the coolest high jewels ever made is from the Rupture suite. I would not say it's my favourite, yet it's not far from it. Three unconventional stones – a *rivière* of 33 brilliant-cut zircons, 15 oval-cut opals for 32.77 carats and a triangle-cut yellow sapphire of 13.81-carats – are joined in a feminine almost sporty necklace set with a bold gold chain. “*Versatile and also transformable into two separate jewels, the necklace’s stones were selected for their legacy and history: the warm, sandy zircons are one of our planet’s oldest minerals, even predating diamonds. The sapphire’s intense orange and yellow luminosity is also rare, and plays off the cool gold chain while symbolising the arrival of the sun in the following evolutionary stage*”, the team adds.

MAGAZINES &
INTERNATIONAL PRESS

NEWSSTAND

press reader



WATCHES



FASHION & JEWELLERY



LIFESTYLE & TRAVEL



FINANCE & MARKETS



HOME & STYLE



SPORTS & LUXURY CARS



JETS & YACHTS