

# THE HAUTE JOAILLERIE REPORT

## SPRING 2023 PART II

*CHOPARD, CINDY CHAO, DAVID MORRIS,  
DE BEERS, DIOR AND GARRARD.*

*Writer: Olivier Dupon*



Model wearing the short version of the transformable Metamorphosis necklace by DE BEERS in 18K white gold, 18K yellow gold and 18K rose gold set with white, yellow and brownish yellow diamonds; **Metamorphosis Collection**. POA.  
[www.debeers.com](http://www.debeers.com)

read  
more...

MAGAZINES &  
INTERNATIONAL PRESS

**NEWSSTAND**

press reader



WATCHES



FASHION & JEWELLERY



LIFESTYLE & TRAVEL



FINANCE & MARKETS



HOME & STYLE



SPORTS & LUXURY CARS



JETS & YACHTS





TURN VISION  
INTO LEGACY



**BNP PARIBAS**  
WEALTH MANAGEMENT

The bank  
for a changing  
world

MAGAZINES &  
INTERNATIONAL PRESS

**NEWSSTAND**

*press reader*



WATCHES



FASHION & JEWELLERY



LIFESTYLE & TRAVEL



FINANCE & MARKETS



HOME & STYLE



SPORTS & LUXURY CARS



JETS & YACHTS



[www.chopard.com](http://www.chopard.com)

The 2023 vintage of exceptional gemstones: pick your colour and your shape. POA.



The CHOPARD carousel of beautiful loose gemstones is back again. It is an unmissable rendez-vous and a fixture of the Swiss high jeweller's January calendar. Alongside the colourful panorama of seven rare gemstones (unheated / non treated), let's mention the magnificent floral décor that led to one of the private salons of the Hotel Evreux on Place Vendôme. Co-President and Artistic Director Caroline Scheufele's passion for flowers permeates her creations and I am grateful to her for sharing it in such memorable ways. As always, each loose stone sat next to a drawing of how it could be set; Scheufele's creative insight to guide prospective collectors. Perfection comes in a pair of vivid yellow Ceylon sapphires (excellent clarity and perfectly matched colour), one of which could be set in a cuff, a mythological design of Greek statues holding one of the sizeable gems. Simpler, yet not so classical projects involve a few octagonal gems – I wonder why this cut is so prevalent in this year's batch. There is one unheated 26.70-carat Royal Blue sapphire (to become a ring set with two triangular rose-cut diamonds on each shank); one unheated 10.06-carat vivid red ruby from East-Africa (to be set in a ring with two heart-shaped diamonds on each side); an arresting duo of exceptional coloured diamonds (pear-shaped green diamonds from Brazil and pear-shaped pink diamonds from South Africa) is going to feature in a mismatched pair of pendant earrings (with the lace-like design signature of CHOPARD).

MAGAZINES &  
INTERNATIONAL PRESS

**NEWSSTAND**
*press reader*


WATCHES



FASHION &amp; JEWELLERY



LIFESTYLE &amp; TRAVEL



FINANCE &amp; MARKETS



HOME &amp; STYLE



SPORTS &amp; LUXURY CARS



JETS &amp; YACHTS



[www.chopard.com](http://www.chopard.com)

A pair of oval-shaped Ceylon yellow sapphires (respectively 151.19 and 127.70cts), one of which to be set in a sculptural cuff. POA.



An unheated 10.06-carat vivid red ruby to be set in a ring. POA.



High Jewellery Necklace in 18K white gold set with white diamonds and one more than 100-carat fancy intense yellow diamond. POA.



MAGAZINES & INTERNATIONAL PRESS

**NEWSSTAND**

press reader



WATCHES



FASHION & JEWELLERY



LIFESTYLE & TRAVEL



FINANCE & MARKETS



HOME & STYLE



SPORTS & LUXURY CARS



JETS & YACHTS



[www.chopard.com](http://www.chopard.com)

A set of three green and three pink pear-shaped diamonds (the largest in the group weighs 4.63 carats) to be set in a pair of pendant earrings and a ring. POA.



Last but not least, the merry-go-round concludes with a daring association. The piercing blue of Paraiba-like oval tourmalines from Mozambique with the verdant beauty of emeralds (heart-shaped, a feat in itself) for a majestic cocktail ring. Two more colour-matched tourmalines can turn into another Scheufele sensation.

Those loose stones were displayed on a round table in the centre of the salon, while splendid high jewels were shown inside glass cabinets around the room; among which a white diamond necklace starring a more than 100-carat fancy intense yellow diamond (friend of the house, Julia Roberts may have worn it on a red carpet), a folly in the form of a necklace with pink sapphire motifs (inspired by the lace collars of 17th century courtiers' costumes), or perfectly simple pendant earrings (keeping their best cards close to their chest: Type IIa flawless white diamonds above no oil Colombian emeralds).

Comparing CHOPARD's January presentations to a candy store would be reductive, yet there is something delicious about shopping for these exceptional coloured gemstones.

MAGAZINES &  
INTERNATIONAL PRESS

**NEWSSTAND**
*press reader*


WATCHES



FASHION &amp; JEWELLERY



LIFESTYLE &amp; TRAVEL



FINANCE &amp; MARKETS



HOME &amp; STYLE



SPORTS &amp; LUXURY CARS



JETS &amp; YACHTS





WATCHES



FASHION &amp; JEWELLERY



LIFESTYLE &amp; TRAVEL



FINANCE &amp; MARKETS



HOME &amp; STYLE



SPORTS &amp; LUXURY CARS



JETS &amp; YACHTS

Discover more

探索更多内容


**DUCRU-BEAUCAILLOU**
**THREE CENTURIES OF BEAUX CAILLOUX\* IN SAINT-JULIEN**

(\*BEAUTIFUL STONES)



[www.cindychao.com](http://www.cindychao.com)

Recipient of the French honour of Chevalier dans l'Ordre des Arts et Lettres in 2021, CINDY CHAO chose the Hôtel de la Marine to present her 2022 Black Label Masterpieces. Having recently re-opened after an extensive renovation, it was designed by Ange-Jacques Gabriel, the king's chief architect in the 18th century. Until 1798, it housed the Garde-Meuble de la Couronne, before becoming the headquarters of France's navy ministry for over 200 years. Such a legacy resonates quite well with Chao's own road to success. Besides, a view onto Place de la Concorde made a perfect backdrop for the 2022 Black Label Masterpiece X and XI - Spring Cardamom Brooches. Suspended mid-air inside glass cabinets, the two pieces looked just ripe to be handpicked. Similar but not exactly the same, each brooch features a sizeable oval-shaped emerald cabochon (from Colombia). We are talking about approx. 81 carats each. Both nestled inside its own entirely gem-paved vessel, a diamond-paved sphere of about the same size mirrors each emerald. The likeness to cardamom beans resides in the leaves and pod, but stops short as Masterpiece X and XI are primarily hybrids. Once again, they can be scrutinised from all angles as no stone was left unturned – no space was left unset. The gradient of green subtly turns into yellow and vice et versa. Colour change garnets inject a touch of purple, hinting at the decay of the leaves. It would thus be a sacrilege to part the two brooches as they work perfectly in unison.

2022 Black Label Masterpiece X and XI - Spring Cardamom Brooches: (left) titanium set with one 80.79-carat oval-shaped cabochon Colombian emerald, diamonds, yellow diamonds, brown diamonds, colour-change garnets, tsavorites, greyish blue sapphires, greyish green sapphires, tourmalines (total weight 4,259 pcs, 251.35cts); (right) titanium set with one 81.11-carat oval-shaped cabochon Colombian emerald, diamonds, brown yellow diamonds, brown diamonds, colour-change garnets, demantoids, tsavorites, greyish blue sapphires, greyish green sapphires, alexandrite (total weight 5,356 pcs, 235.07cts). POA.


MAGAZINES &  
INTERNATIONAL PRESS

**NEWSSTAND**
*press reader*


WATCHES



FASHION &amp; JEWELLERY



LIFESTYLE &amp; TRAVEL



FINANCE &amp; MARKETS



HOME &amp; STYLE



SPORTS &amp; LUXURY CARS



JETS &amp; YACHTS



[www.cindychao.com](http://www.cindychao.com)

White Label Collection - Sapphire Dragonfly Brooch in ox horn, 18K white gold and 18K yellow gold set with one pear-shaped Sri Lankan sapphire (18.62cts), one pear-shaped royal blue Sri Lankan sapphire (17.70cts), diamonds, yellow diamonds, pink sapphires, sapphires and purple garnets (total weight 514 pcs, 90.65cts). POA.



These masterpieces were accompanied by a few creations from the White Label collection. Among which, the Sapphire Dragonfly Brooch is quite arresting when seen in reality. A piece of ox horn makes the frail body from which sprawling wings are deployed. How they could embed a pear-shaped diamond into the top of the bone stick is anyone's guess. Two pear-shaped sapphires adorn the tips of each wing. The Emerald Architectural Earrings are part fish bone part twigs. Shoots of fancy cut diamonds (white and yellow) spring from the tsavorite-paved branches, at the end of which oval-shaped emerald cabochons arise (three on each earring). An unheated sapphire from Sri Lanka is the heart of the Sapphire Floral Brooch. Signature yellow lacquer is used for the pistils and a single leaf is a cabochon-cut emerald. Petals follow the same CINDY CHAO's fully paved recipe where no metal is to be seen. Lastly, the Sweet Violet Earrings bear their name well. A medley of white diamonds, purple sapphires and purple garnets creates light and shade on the petals. Chao's favourite conch pearls are the centres, surrounded by yellow lacquered pistils. The tip of each stem is set with a Fancy Intense Yellow diamond. In short, CINDY CHAO offers an exalted version of botany.

MAGAZINES &  
INTERNATIONAL PRESS

**NEWSSTAND**

press reader



WATCHES



FASHION & JEWELLERY



LIFESTYLE & TRAVEL



FINANCE & MARKETS



HOME & STYLE



SPORTS & LUXURY CARS



JETS & YACHTS



[www.cindychao.com](http://www.cindychao.com)

White Label Collection – Emerald Architectural Earrings in 18K white gold and 18K yellow gold set with 6 oval-shaped cabochon Muzo green Colombian emeralds (11.78cts), fancy-cut diamonds, fancy-cut yellow diamonds, sapphires, and tsavorites (total weight 832 pcs, 33.62cts). POA.



White Label Collection – Sweet Violet Earrings in titanium, 18K white gold and 18K yellow gold set with two Conch pearls (3.97 and 3.95cts), diamonds, Fancy Intense Yellow diamonds, purple garnets and purple sapphires (total weight 2,533 pcs,/ 58.36cts). POA.



White Label Collection – Sapphire Floral Brooch in titanium and 18K yellow gold set with pear-shaped cabochon-cut unheated Sri Lankan sapphire (26.47cts), cabochon-cut Colombian emerald (8.79cts), diamonds, yellow diamonds, colour-change garnets, rhodolites and tsavorites (total weight 2,228 pcs, 96.90cts). POA.



MAGAZINES &  
INTERNATIONAL PRESS

**NEWSSTAND**

*press reader*



WATCHES



FASHION & JEWELLERY



LIFESTYLE & TRAVEL



FINANCE & MARKETS



HOME & STYLE



SPORTS & LUXURY CARS



JETS & YACHTS



# F.P. JOURNE

## Invenit et Fecit

*"I invented it and made it"*



Ref. TV - Tourbillon Souverain  
Vertical tourbillon with constant force remontoire and deadbeat second  
Manual winding movement in 18K rose Gold, Geneva made

### The Boutiques

Geneva Paris Tokyo New York Los Angeles Miami Hong Kong Beirut Kiev Dubai

[fpjourne.com](http://fpjourne.com)

MAGAZINES &  
INTERNATIONAL PRESS

**NEWSSTAND**

*press* reader



WATCHES



FASHION & JEWELLERY



LIFESTYLE & TRAVEL



FINANCE & MARKETS



HOME & STYLE



SPORTS & LUXURY CARS



JETS & YACHTS



[www.davidmorris.com](http://www.davidmorris.com)

Amunet Choker in 18K white gold set with one 43.04-carat Australian black opal, lapis lazuli (314.94cts), white diamonds (27.21cts), pink spinels (6.48cts), Paraiba tourmalines (4.51cts), blue sapphires (1.45cts) and emeralds (0.60ct); **Skylines Collection**. POA.



Always look above and beyond, always reach for the stars. This is the Skylines collection by DAVID MORRIS promise. The design team has observed the way light plays with London buildings throughout the day and night, all the while aiming far away for the cosmos by exploring the ancient Egyptian view of it. Inspiration can easily lead one on peripheral roads, which makes it all better for creativity in the end. In DAVID MORRIS's world, the sky could always be blue as seen in the pre-eminence of Burmese sapphires, rare blue diamonds, or the combination of cerulean stones (Paraiba tourmalines, lapis lazuli and black opals) for the Amunet necklace. Merging Ancient Egypt iconography with a contemporary approach resides in the plastron of this masterpiece. Wings fanning outwards from a central 43-carat oval opal are made of a tapestry of fancy-cut diamonds, a row of pink spinels, and several rows of Paraiba tourmalines. The neck plate is attached by multi strands of lapis lazuli beads. The clasp – set with a Burmese sapphire – is a masterpiece in itself. Could this detail become a signature? Indeed, a Ceylon sapphire was adorning the clasp of a necklace from the 60th Anniversary collection last year.

Blue is also to be found in the architectural Mosaica necklace and matching earrings – made of tessellating kite and triangular motifs –, the Vega ring set with a stunning velvety blue Burmese sapphire in the centre and dots of signature pink diamond around, and the Capola neckpiece set with a 65-carat Burmese sapphire cabochon, white diamonds and rock crystal. *“The geometric chevron motifs are crafted using two separate pieces of rock crystal, which were specially faceted to slot together, and set at different angles and staggered”*, the team explains.

MAGAZINES &  
INTERNATIONAL PRESS

**NEWSSTAND**

press reader



WATCHES



FASHION & JEWELLERY



LIFESTYLE & TRAVEL



FINANCE & MARKETS



HOME & STYLE



SPORTS & LUXURY CARS



JETS & YACHTS



[www.davidmorris.com](http://www.davidmorris.com)

Capola Necklace in 18K white gold set with one 64.55-carat Burma sapphire cabochon, rock crystal (48.35cts) and white diamonds (18.18cts); **Skylines Collection**. POA.



Fusion Flexi Bangle in 18K white gold set with white diamonds (9.59cts); **Skylines Collection**. POA.



Mosaica Earrings in 18K white gold set with blue sapphires (6.40cts) and white diamonds (7.02cts); **Skylines Collection**. POA.



Glaciale Necklace in 18K white gold set with round, triangle and fancy cut white diamonds (55.67cts); **Skylines Collection**. POA.



MAGAZINES &  
INTERNATIONAL PRESS

**NEWSSTAND**

*press reader*



WATCHES



FASHION & JEWELLERY



LIFESTYLE & TRAVEL



FINANCE & MARKETS



HOME & STYLE



SPORTS & LUXURY CARS



JETS & YACHTS



[www.davidmorris.com](http://www.davidmorris.com)

Meteora Earrings in 18K white gold set with tourmalines (60.66cts), black onyx (73.35cts) and white diamonds (10.52cts); **Skylines Collection**. POA.



Meteora Aurora Maelstrom Ring in 18K white gold set with one 4.28-carat pear-shaped blue diamond, pink diamonds (1.71cts) and white diamonds (3.06cts); **Skylines Collection**. POA.



Geometry is now well-embedded in DAVID MORRIS's repertoire. Innovative setting and the use of fancy cut diamonds allow the London jeweller to achieve increasingly intricate patterns with the surgical precision of a stitch. This is all the more apparent in the all-white pieces. The transformable Aurora Maelstrom necklace (a distant cousin of the Geo necklace from the 60th Anniversary collection) is a garland of round-cut and pear-shaped white diamonds, some set in kite or elongated hexagonal white gold settings; whereas the Glaciale necklace and Glaciale Trilliant earrings feature triangle-cut and fancy-cut white diamonds that are set in shield-shaped settings (the design is as sharp as they come). The Fusion necklace and bracelet evoke the fluidity and suppleness of a reptile thanks to a repetitive assemblage of large links (six diamond-paved rows have seemingly parted when a marquise diamond has been placed in the middle). The flexi bracelet benefits from the *sprungstructure*.

As for other colours, pink hues are naturally present. As are pink diamonds, often paired with blue diamonds (Aurora Maelstrom ring and Gemini ring) or as pink tourmalines highlighted with black onyx (Meteora earrings and necklace). The latter is a first for the high jeweller who had so far not used black accents in his creations. The Meteora suite is rubensnesquely futuristic.

MAGAZINES &  
INTERNATIONAL PRESS

**NEWSSTAND**

press reader



WATCHES



FASHION & JEWELLERY



LIFESTYLE & TRAVEL



FINANCE & MARKETS



HOME & STYLE



SPORTS & LUXURY CARS



JETS & YACHTS



★  
**ZENITH**

> DISCOVER MORE  
DEFY ZERO G



MAGAZINES &  
INTERNATIONAL PRESS

**NEWSSTAND**

*press reader*



WATCHES



FASHION & JEWELLERY



LIFESTYLE & TRAVEL



FINANCE & MARKETS



HOME & STYLE



SPORTS & LUXURY CARS



JETS & YACHTS



[www.debeers.com](http://www.debeers.com)

Bracelet in 18K white gold, 18K yellow gold and 18K rose gold set with white, yellow and brownish yellow diamonds; **Metamorphosis** collection. POA.



In **Metamorphosis** by DE BEERS, the jeweller sees “a high jewellery collection dedicated to the transformative power of natural diamonds”. I see a highly wearable collection for the here and now. If last year’s the Alchemist of Light collection was any indication (a splendid pre-collection in January followed by a surprisingly innovative main collection in July), the prelude of **Metamorphosis** augurs well for the rest of the collection later this year. Gold chain trimmings, diamond-paved tassels, and precious metals make for pieces redolent of a re-imagined aristocracy and fit for today’s women. Attention has been put into the creation of new links: rice grains in polished yellow gold (paved with diamonds every other two); hollow rice grains in polished white gold, in which round diamonds are set; a *fil couteau* strand linking round brilliant white diamonds (with a *perlée* setting) and round brilliant yellow diamonds set in a round star-shaped gold setting; and a solid rose gold ribbon carved into a zigzag pattern and set with round white and brown diamonds. The versatile designs of the chains have inspired a multi-strand sautoir transformable necklace, a bracelet, hoop earrings, the jackets of transformable rings... Combined, the links evoke a damask of white, rose, yellow gold, and diamonds.

The only global luxury brand that begins at the source, DE BEERS has always been able to mix rare coloured diamonds, rough or faceted. It is also the only high jeweller that is only using diamonds in each creation (no semi-precious stones, no rubies, emeralds etc.), so that colours in designs are always obtained by coloured diamonds. In this prelude collection, the diamonds are all faceted and the emphasis is on white, brown and fancy-coloured diamonds.

MAGAZINES &  
INTERNATIONAL PRESS

**NEWSSTAND**

press reader



WATCHES



FASHION &amp; JEWELLERY



LIFESTYLE &amp; TRAVEL



FINANCE &amp; MARKETS



HOME &amp; STYLE



SPORTS &amp; LUXURY CARS

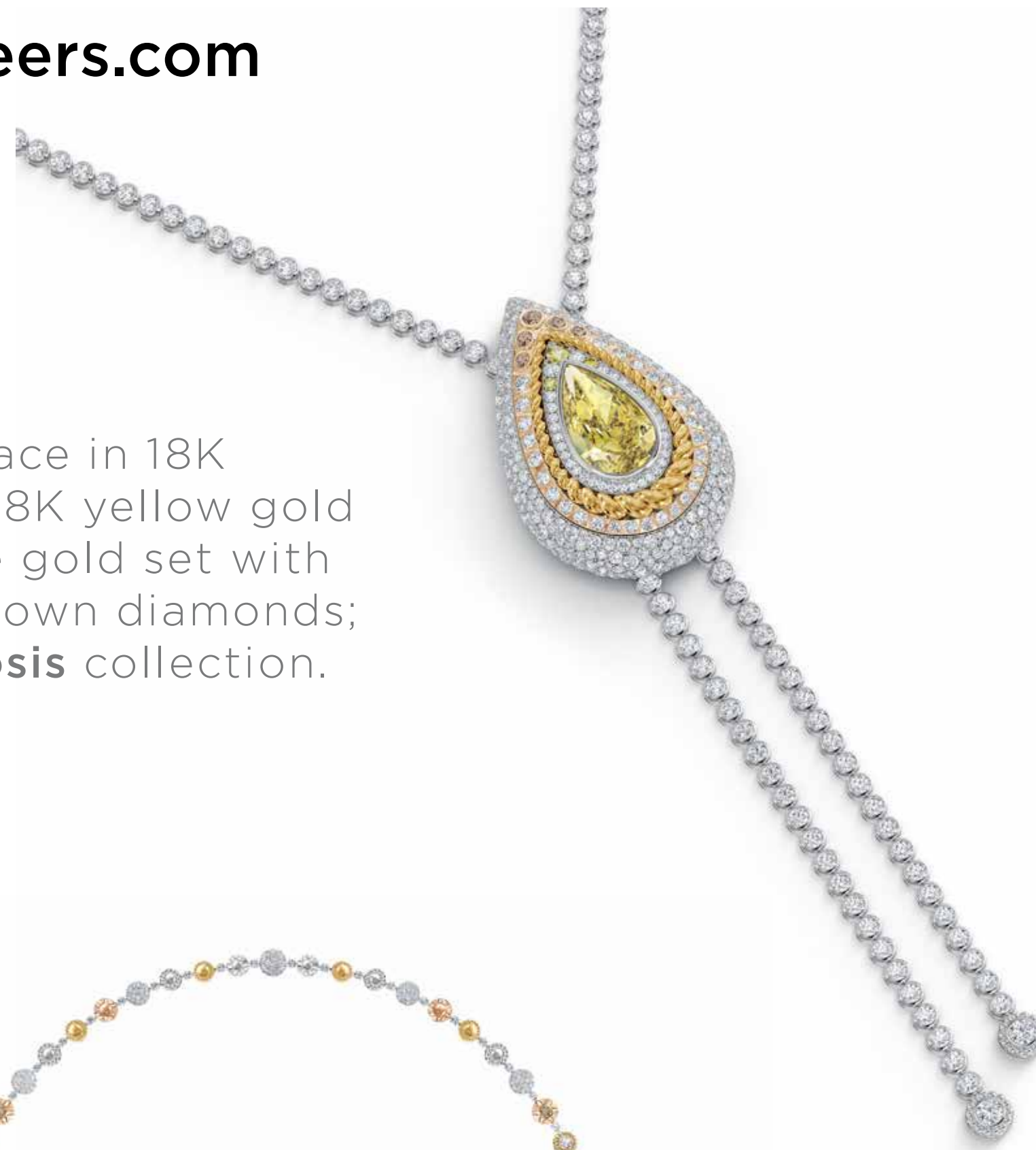


JETS &amp; YACHTS



[www.debeers.com](http://www.debeers.com)

Lariat Necklace in 18K white gold, 18K yellow gold and 18K rose gold set with white and brown diamonds; **Metamorphosis** collection. POA.



Pendant Ear Cuff with diamond stud in 18K white gold, 18K yellow gold and 18K rose gold, titanium set with white, yellow and brownish yellow diamonds; **Metamorphosis** collection. POA.



Transformable Necklace in 18K white gold, 18K yellow gold and 18K rose gold set with white, yellow and brownish yellow diamonds; **Metamorphosis** collection. POA.

MAGAZINES &  
INTERNATIONAL PRESS

**NEWSSTAND**

*press* reader



WATCHES



FASHION & JEWELLERY



LIFESTYLE & TRAVEL



FINANCE & MARKETS



HOME & STYLE



SPORTS & LUXURY CARS



JETS & YACHTS



[www.debeers.com](http://www.debeers.com)

Transformable Ring with jacket in 18K white gold, 18K yellow gold and 18K rose gold set with white, yellow and brownish yellow diamonds; the solitaire ring set with one 3.06-carat D-Flawless diamond solitaire from the De Beers Natural Works of Art collection can be interchanged with a pavé-set diamond ring **Metamorphosis** collection. POA.



One of the key necklaces is transformable. It alternates four diamond chains – “one for each season” – fixed to two removeable clasps on each side. The other lariat-style neckpiece presents a pear-shaped yellow diamond, which is set in a pear-shaped medallion made of the **Metamorphosis** chains. The pendant ear cuff and accompanying stud is a conversation opener. The same chains act as tassels and each is finished with a coloured-titanium chrysalis, “hinting at the beginnings of nature’s most magnificent metamorphosis”. These chrysalises can be removed and worn on a charm bracelet. The Cocktail rings are also a success, all the more when transformable.

In one, the four chain designs form a ring jacket from which a 3.06-carat D-Flawless diamond solitaire from the De Beers Natural Works of Art collection can be interchanged with a pavé-set diamond ring. So much care is put into versatility and ease of wear for each piece that DE BEERS is now firmly positioned as a purveyor of high jewels in tune with the modern lifestyle and demands of collectors.

MAGAZINES &  
INTERNATIONAL PRESS

**NEWSSTAND**

press reader



WATCHES



FASHION & JEWELLERY



LIFESTYLE & TRAVEL



FINANCE & MARKETS



HOME & STYLE



SPORTS & LUXURY CARS



JETS & YACHTS





# A hotel that elegantly whisks you from New York to Paris

RESERVE NOW

HÔTEL BARRIÈRE  
*Fouquet's*  
NEW YORK

MAGAZINES &  
INTERNATIONAL PRESS

**NEWSSTAND**

press reader



WATCHES



FASHION & JEWELLERY



LIFESTYLE & TRAVEL



FINANCE & MARKETS



HOME & STYLE



SPORTS & LUXURY CARS



JETS & YACHTS



[www.dior.com](http://www.dior.com)

Dearest Dior Earrings in 18K yellow gold set with blue sapphires and diamonds; **Dearest Dior Collection**. POA.



Dearest Dior Choker in 18K yellow gold set with pink sapphires and diamonds; **Dearest Dior Collection**. POA.



Although the **Dear Dior** and **Cher Dior** (10 years ago) and **Dior Dior Dior** (five years ago) collections have cemented Victoire de Castellane's vocabulary for DIOR High jewellery (the painterly combination of colours, the sculptural juxtaposition of various cuts), with an emphasis on the superlative, the new **Dearest Dior** collection is almost taking stock of how the essence of DIOR high jewellery has evolved through the years. It is more refined, more complex and as a result more ravishing. Side by side, the pieces from **Dear Dior**, **Cher Dior**, **Dior Dior Dior** and **Dearest Dior** indeed present a progression towards a lighter and more detailed aesthetic.

With seventy seven creations, **Dearest Dior** is the closest attempt to date to seize the nature of lace in a piece of jewellery. De Castellane's obsession is for jewels to feel like a second skin and the delicacy of openwork lace is her perfect template to emulate that attribute (textile tattoo becomes metal tattoo). *"The mounts of the necklaces, rings and bracelets are so airy they seem to disappear, leaving diamonds and rubies, pearls and tourmalines, blue, pink or yellow sapphires to reveal their shimmering shades in complex compositions that evoke the intertwining of refined guipure"*, the team shares.

MAGAZINES &  
INTERNATIONAL PRESS

**NEWSSTAND**
*press* reader


WATCHES



FASHION &amp; JEWELLERY



LIFESTYLE &amp; TRAVEL



FINANCE &amp; MARKETS



HOME &amp; STYLE



SPORTS &amp; LUXURY CARS



JETS &amp; YACHTS



[www.dior.com](http://www.dior.com)

Dearest Dior Earrings in 18K white gold set with diamonds; **Dearest Dior Collection**. POA.



Dearest Dior Necklace in 18K white gold and titanium set with emeralds and diamonds, with green lacquer; **Dearest Dior Collection**. POA.



Dearest Dior Brooch in 18K white gold and titanium set with emeralds and diamonds, with green lacquer; **Dearest Dior Collection**. POA.

MAGAZINES &  
INTERNATIONAL PRESS

**NEWSSTAND**

*press* **reader**



WATCHES



FASHION & JEWELLERY



LIFESTYLE & TRAVEL



FINANCE & MARKETS



HOME & STYLE



SPORTS & LUXURY CARS

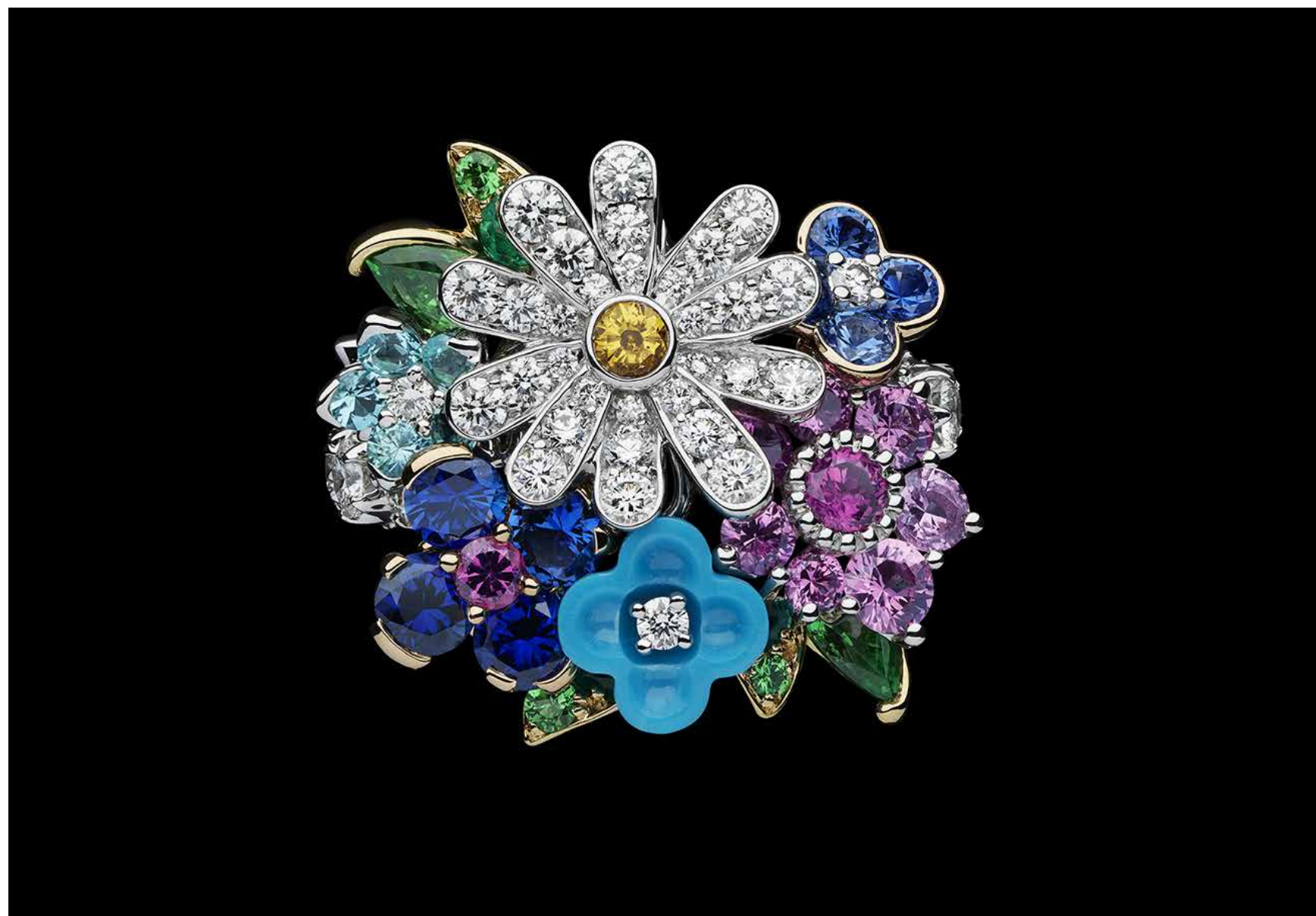


JETS & YACHTS



[www.dior.com](http://www.dior.com)

Dearest Dior Ring in 18K white gold, 18K pink gold, 18K yellow gold, set with diamonds, blue, pink and yellow sapphires, tsavorite garnets, Paraiba-type tourmalines, emeralds, turquoise and purple garnet; **Dearest Dior Collection**. POA.



Dearest Dior Bracelet in 18K white gold set with diamonds, sapphires, tsavorite garnets, and blue tourmalines; **Dearest Dior Collection**. POA.



The gold work is phenomenal (e.g. the mix of matt, polished and satin finishes), and although it is extremely airy and fine, it remains present, composing lace-like backdrops for the gemstones, which then become embroideries. Loops of mini gold ropes and beaded prongs revolutionise the construction of a ring; the same ribbon of gold rope loops becomes a choker whose bottom frieze is a gem-paved garland. French lace from the Belle Époque comes to mind. A parure of white gold set with emeralds is reminiscent of a Napoleon laurel crown, with portrait-style medallions. The honeycomb mesh at the centre is surrounded by a row of round diamonds, then a crown of marquise-shaped diamonds. The vivid green lacquer highlights certain shapes and the central *résille*. De Castellane's high jewellery collections can be seen as a 'let's spot the lacquer' game. It is often somewhere, in full view or not.

**Dearest Dior** is also nodding to last year's **Dior Print** collection (the floral wreath) and to the **Dior à Versailles, Côté Jardins** collection a few years ago (the freshly handpicked bouquet of multi-coloured garden flowers). A technical prowess, an ode to Couture and Mr Dior's love for flowers, **Dearest Dior** is above all conjuring up the symbolism of corsages.

MAGAZINES &  
INTERNATIONAL PRESS

**NEWSSTAND**

press reader



WATCHES



FASHION & JEWELLERY



LIFESTYLE & TRAVEL



FINANCE & MARKETS



HOME & STYLE



SPORTS & LUXURY CARS



JETS & YACHTS



[www.dior.com](http://www.dior.com)


The Dior Grand Soir Automate Étoile de Monsieur Dior Watch combines white gold and diamonds for a limited edition of 28 pieces, each within a case measuring 38 mm in diameter. POA.

Dearest Dior Necklace in 18K white gold set with diamonds and blue sapphire; **Dearest Dior Collection.** POA.



Poetry is one constant attribute of DIOR watches. What if motion was added? The luxury house is proposing for the first time watches that come to life for thirty seconds at the touch of a small button hidden in the crown. **Dior Grand Soir Automate** watches are just that: poetry in motion. The first model, Dior Grand Soir Automate Étoile de Monsieur Dior, features a dial that celebrates Monsieur Dior's favourite symbols: *"the star guiding his steps when he founded his fashion house; the iconic address of 30, avenue Montaigne; and the constellation of Aquarius corresponding to his zodiac sign. If the automaton mechanism slides a shooting star across the horizon, Christian Dior's lucky-charm star sparkles endlessly in the firmament, amid a night sky sprinkled with pearly clouds"*, the team says. Details abound like the illuminated windows (engraved brass), or the expressive clouds and the building which are made of engraved and printed mother-of-pearl. There is a set of two straps; one being a black varnished calf strap with glitter gradient (extending the milky way), the other, one is in black alligator.

MAGAZINES &  
INTERNATIONAL PRESS

**NEWSSTAND**
*press* reader


WATCHES



FASHION &amp; JEWELLERY



LIFESTYLE &amp; TRAVEL



FINANCE &amp; MARKETS



HOME &amp; STYLE



SPORTS &amp; LUXURY CARS



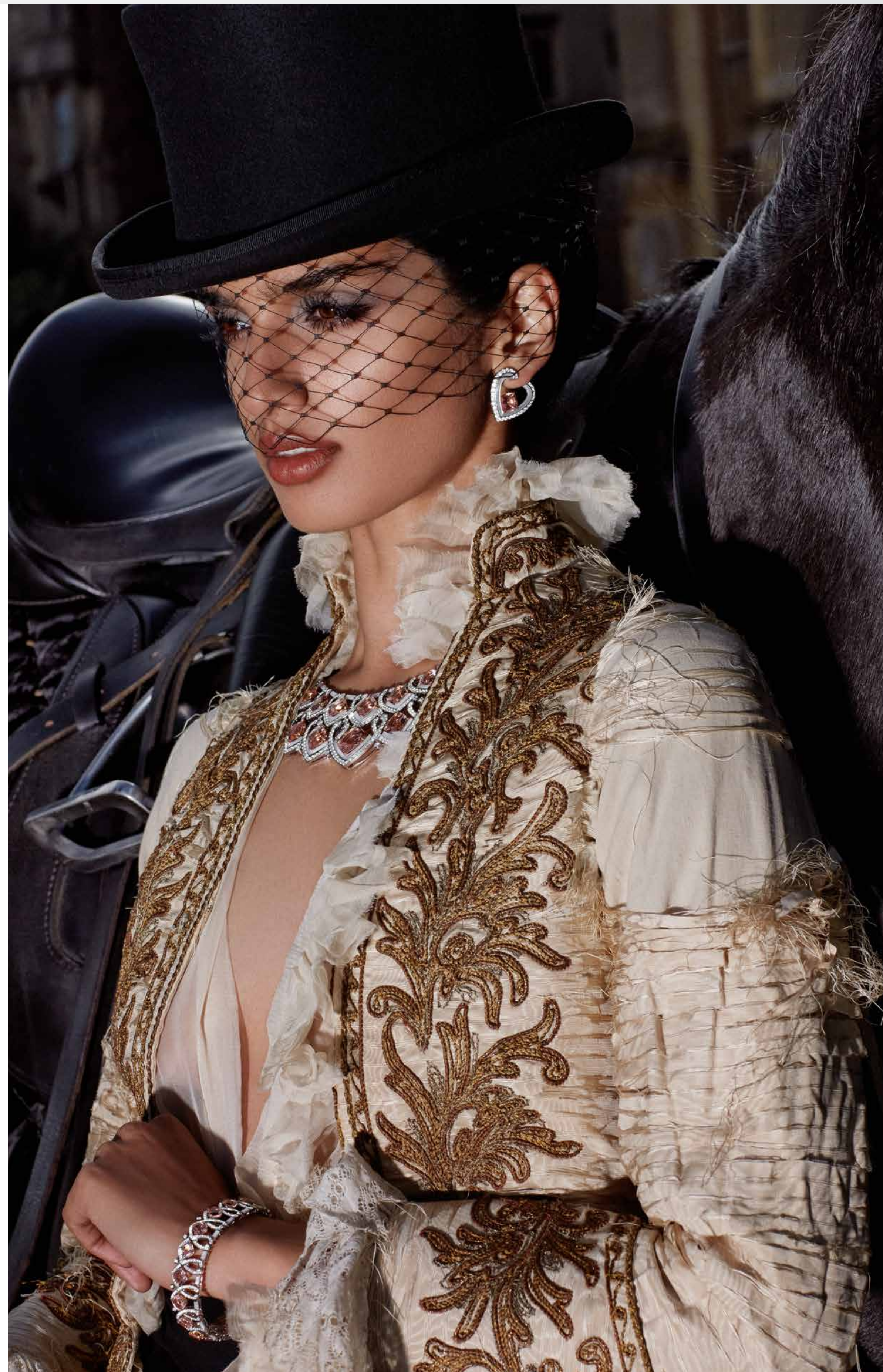
JETS &amp; YACHTS



<https://garrard.com>

Model wearing the Couture Desert Rose Necklace, Bracelet and Earrings all in 18K white gold set with cushion-cut morganites, round diamonds and pieces of mother-of-pearl inlay; **Couture Collection**. POA.

**Dare to Rule.** Although there is no question mark, the challenge is implied. Would you shed a lack of self-confidence and embrace the new you? 'Bold and unabashedly glamorous, head held high' is in short what GARRARD's new couture pieces incite. **Couture** is a side collection to GARRARD's high jewellery line, "a new category of high jewellery that dares to be different". While in recent years some other houses have tended to make high jewels day-wear proof, GARRARD does not shy away from positioning its latest collection as aristocratic and flamboyant. As seen in the Rule campaign that is set in the grounds of a British castle, models wearing huge gowns in vivid colours or embroidered court jackets. The nod to Marie Antoinette comes with one model holding pet rabbits and wearing a high wig. That said, it is not a literal costume party, but rather the *mise en scène* of a contemporary queen with 18th century idiosyncrasies. The modern cream sofa, the high heel boots or the wet hair look are with many details that indicate indeed that **Couture** is a modern collection.



MAGAZINES &  
INTERNATIONAL PRESS

**NEWSSTAND**

press reader



WATCHES



FASHION & JEWELLERY



LIFESTYLE & TRAVEL



FINANCE & MARKETS



HOME & STYLE



SPORTS & LUXURY CARS



JETS & YACHTS



<https://garrard.com>

Couture Amazonia Necklace in 18K white gold set with one Gübelin certificated 6.19-carat cushion-cut Colombian emerald, 394 round diamonds (12.76cts), 73 round tsavorites (3.94cts), 135 *calibré*-cut tsavorites (9.63ct), and 50 pieces of malachite inlay (16.64cts); **Couture Collection**. POA.



Couture Amazonia Ring in 18K white gold set with one Gübelin certificated 3.17-carat cushion-cut Colombian emerald, 21 round diamonds (0.52ct), 7 round tsavorites (0.34ct), 8 *calibré*-cut tsavorites (0.53ct), and two pieces of malachite inlay (0.92ct); **Couture Collection**. POA.



Couture Desert Rose Drop Earrings in 18K white gold set with 2 emerald-cut bi-colour emerald (17.39cts), 24 round diamonds (0.54ct) and 10 round, faceted pieces of mother-of-pearl (17.58cts); **Couture Collection**. POA.



Couture Mustique Earrings in 18K white gold set with 2 smooth-briolette aquamarines (30.33cts), 2 Asscher-cut aquamarines (5.62cts), 200 round diamonds (1.10cts) and 34 pieces of cabochon turquoise (5.88cts); **Couture Collection**. POA.

MAGAZINES &  
INTERNATIONAL PRESS

**NEWSSTAND**
*press reader*


WATCHES



FASHION &amp; JEWELLERY



LIFESTYLE &amp; TRAVEL



FINANCE &amp; MARKETS



HOME &amp; STYLE



SPORTS &amp; LUXURY CARS



JETS &amp; YACHTS



<https://garrard.com>

**Couture** offers nineteen pieces, four suites. The only similarity with antique regal jewels is the sheer size of the creations. The modern twist resides in the choice of rare semi-precious stones and out-of-the-box design. As seen on the first spread, the Couture Desert Rose set showcases a heart-shaped scallop pattern, inside each of which a morganite underlined by inlaid mother-of-pearl is set. The scallops are paved with white diamonds. Drop earrings from the same group are aesthetically different. They are set with bi-colour tourmalines hanging from a tassel of round white mother-of-pearl.

The Couture Amazonia suite could be inspired by a verdant jungle seen through a mist curtain. Semi-precious (tsavorites) and hard stones (malachite) are set within white gold rays, from which droplets of round diamonds drip. A Gübelin certified Colombian emerald sits at the upper crux of the neckpiece. The Couture Northern Light story features a shimmering wave construction. The fan-like design is made of a marquetry of mother-of-pearl and diamond-paved ingots, animated by a line of multi-coloured sapphires and crowned by white opals (for the necklace and ring). The Mustique set of three renditions (a neckpiece and two style of earrings) marries aquamarines and turquoise; a duality between clear and solid, between scintillating and satin-finished. A plumage made of hollowed diamond-paved feathers compose the body of the necklace.

Model wearing the Couture Northern Light Necklace, Bracelet and Earrings in 18K white gold set with Australian cabochon opals (necklace and ring), round diamonds, round multi-coloured sapphires, round tsavorites and pieces of mother-of-pearl inlay; **Couture Collection**. POA.


MAGAZINES &  
INTERNATIONAL PRESS

**NEWSSTAND**

press reader



WATCHES



FASHION &amp; JEWELLERY



LIFESTYLE &amp; TRAVEL



FINANCE &amp; MARKETS



HOME &amp; STYLE



SPORTS &amp; LUXURY CARS



JETS &amp; YACHTS